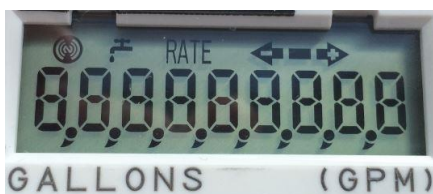




# How to Read the Neptune E-Coder® Register

To read your Neptune E-Coder® register, expose the solar panel to sunlight or shine a bright light (i.e. flashlight or cell phone flashlight), and the display will activate.

When activated, the LCD display will first show a segment test:



This screen will be followed by the display of the E-Coder's manufacturing configuration, followed by two (2) reading screens:

**Reading** - Shows the current read with comma separators and decimal place, after initial activation this screen displays for 20 seconds before toggling to Rate Screen. Each additional Read Screen displays for 8 seconds. The below image shows a reading value of 179.21 (one hundred, seventy-nine) US gallons.



**Flow Rate** - When the screen toggles, the rate of flow is visible and is shown in gallons per minute for four seconds. Then it toggles back to the read screen. The image below shows a flow rate of 50.7 (fifty) gpm.



	<p><b>FLOW INDICATOR</b> Shows the direction of flow through the meter:</p> <p><b>ON</b> Water in use. <b>OFF</b> Water not in use. <b>Flashing</b> Water is running slowly. <b>(-)</b> Reverse flow. <b>(+)</b> Forward flow.</p>
	<p><b>LEAK INDICATOR</b> Displays a possible leak:</p> <p><b>OFF</b> No leak indicated. <b>Flashing</b> Intermittent leak indicates that water has been used for at least 50 of the 96 15-minute intervals during the previous 24-hour period. <b>On Continuously</b> Indicates water use for all 96 15-minute intervals during the previous 24-hour period.</p>
<p>RATE</p>	<p><b>RATE OF FLOW</b> Average flow rate is displayed every twelve (12) seconds on LCD display.</p>
	<p><b>LCD DISPLAY</b> Nine-digit LCD displays the meter reading in billing units of measure: U.S. gallons, cubic feet, Imperial gallons, or cubic metres.</p> <p><b>1</b> E-Coder Basic Reading/Customary 6-digit remote reading <b>2</b> Customary sweep hand digits <b>3</b> E-CoderPLUS Reading (8-digit remote reading)</p>



**How is this new E-Coder® different from the original?**

- Fundamentally, the E-Coder is unchanged. We have added a new, easier-to-read LCD with larger numbers, comma separators, and a decimal point. The display time of the consumption reading value has been increased to further facilitate the reading of the display.

**Does the new E-Coder have a battery inside to power the register?**

- No. The E-Coder registers water consumption using no external power supply and no internal battery. The E-Coder features an advanced application specific integrated circuit (ASIC) design using nonvolatile memory technology for a self-powered digital odometer. The solar panel only powers the LCD readout for local direct reading and the E-CoderPLUS features are activated and performed by an advanced ASIC which is powered by the R900® or R450® MIU.

**Will the new E-Coder work with a receptacle and handheld with probe?**

- Yes. The E-Coder can be read with a probe. It can be programmed to output a 4-, 5-, or 6-digit reading, just like a ProRead™ encoder. A 10-digit register ID can also be programmed.

**Is it possible to read the E-Coder through an MIU if the LCD readout is not activated or failed?**

- Yes. The absolute odometer reading is stored in nonvolatile memory in the ASIC.

**Since the E-Coder does not have a mechanical odometer wheel bank, how are the digits encoded and what makes the E-Coder absolute?**

- The E-Coder features an advanced ASIC design using nonvolatile memory technology for a self-powered digital odometer. The digital registration odometer in the ASIC and the LCD readout are guaranteed to be absolutely the same. The visual registration and the remote reading are provided by the same source, making the E-Coder an absolute encoder.

**Why are there nine (9) digits on the LCD readout and I receive only eight (8) digits on my reading device?**

- The E-Coder features nine (9) digits for a visual read only for high-resolution meter testing and leak indication. Only eight (8) digits are passed through the route management software, which is more than adequate for billing purposes.

**I only bill in 100s/1000s. What happens to the additional digits?**

- The meter reading/route management software will truncate the unnecessary digits for billing if desired.

**One of the E-Coders I installed has a forward arrow with a plus sign (+) flashing very slowly in the LCD readout and it will not stop flashing. What is the problem?**

- This indicates a very low flow. Watch the 9th digit in the LCD readout and you will see it increment over time.

**One of the E-Coders I installed has a reverse arrow with a negative (-) sign in the LCD readout, and it will not stop flashing. What is the problem?**

- This icon indicates reverse flow. You either have backflow occurring at the site or the water meter has been installed backwards.

**Why are all of my E-Coders showing days of no flow following installation?**

- When E-Coders are shipped prewired and potted to R900 or R450 MIUs, the PLUS features are activated and the 35-day window is in effect. As long as there is no throughput, the E-Coders will log days of no flow. The E-Coders will also show backflow due to factory testing for backflow functionality. Current leak data will clear after 24 hours following testing at factory, but days of no flow and backflow data will not clear for 35 days following activation in the water system.

**What constitutes a leak? Will our customer service department be inundated with leak flags?**

- All algorithms are set to factor out typical day-to-day water usage such as ice makers, sprinklers, etc. A day is divided into 96 15-minute intervals. If all 96 15-minute intervals show water usage, this constitutes a continuous leak. If 50 to 95 of the 15-minute intervals show water usage, this constitutes an intermittent leak. Typically 15-20 percent of a water utility's customer base has undetected leaks.

**What is the flashing faucet icon on the LCD readout?**

- The flashing faucet indicates an intermittent leak occurrence over the last 24 hours. Check interior and exterior faucets and valves in toilets to see if leakage is occurring.

**What is the solid faucet icon on the LCD readout?**

- The solid faucet indicates a continuous leak occurrence over the last 24 hours. Check the 9th digit in your LCD readout to see if it is incrementing. If so, check interior and exterior faucets, valves in toilets, and look around the exterior of the home for signs of surface water.

**Is the E-Coder field programmable like the ProRead? If so, can you use the standard field programmer and the same programming functions that are used for ProRead?**

- The E-Coder is programmable like the ProRead for ID and reading digits; however, when the E-Coder is attached to an R900 or R450 MIU, it automatically detects this and begins communicating in E-CoderPLUS format.

**Is the E-Coder auto-detect?**

- Yes. The E-Coder will work with an inductive pad with a two-wire connection or a radio MIU with a three-wire connection.

**Are E-Coders networkable? Can two E-Coders be networked to one MIU?**

- The E-Coder is networkable just like the ProRead.

**Will the E-Coder work with Itron, Sensus, and other third-party radio MIUs?**

- E-Coder is compatible in 8-digit mode with Itron 100W, Sensus RadioRead and FlexNet, Aclara MTUs, and Elster Energy Axis (as long as these companies continue to follow the published E-Coder specifications).
- Any other third-party radio MIUs that have ProRead compatibility will also read the E-Coder; however, this is limited to a 6-digit reading.
- Only Neptune R900 or R450 MIUs can activate/interrogate the PLUS features of the E-Coder.

**Does the E-Coder have the same warranty as the ProRead register?**

- Yes. E-Coder has a full 10-year warranty. Please refer to the encoder warranty statement for details.

**Does the E-Coder provide rate-of-flow information?**

- The E-Coder provides a localized read out of average flow rate every twelve (12) seconds on the LCD display. Every twelve (12) seconds the word "RATE" will flash and the flow rate will be displayed for four (4) seconds. Flow rate is indicated in gpm for US gallons or cubic feet registration encoders and in lpm (liters per minute) for metric registers.

**What reading equipment will interrogate the PLUS feature data from the E-Coder when connected to the R900 MIU?**

- When used in conjunction with N\_SIGHT™ R900® host software and handheld software, the following devices can be used to extract E-CoderPLUS data: the Trimble Nomad with R900® Belt Clip Receiver, MRX920™ mobile data collector, or the R900® Gateway data collector.

Neptune Technology Group Inc.  
1600 Alabama Highway 229  
Tallassee, AL 36078  
USA  
Tel: (800) 633-8754  
Fax: (334) 283-7293

Neptune Technology Group (Canada) Ltd.  
7275 West Credit Avenue  
Mississauga, Ontario  
L5N 5M9  
Canada  
Tel: (905) 858-4211  
Fax: (905) 858-0428

Neptune Technology Group Inc.  
Ejército Nacional No. 418  
Piso 12, Desp. 1201-1202  
Col. Chapultepec Morales  
Delegación Miguel Hidalgo  
11570 México, Distrito Federal  
Tel: (525) 55203 5294 / (525) 55203 5708  
Fax: (525) 55203 6503





**How is this new E-Coder® different from the original?**

- Fundamentally, the E-Coder is unchanged. We have added a new, easier-to-read LCD with larger numbers, comma separators, and a decimal point. The display time of the consumption reading value has been increased to further facilitate the reading of the display.

**Does the new E-Coder have a battery inside to power the register?**

- No. The E-Coder registers water consumption using no external power supply and no internal battery. The E-Coder features an advanced application specific integrated circuit (ASIC) design using nonvolatile memory technology for a self-powered digital odometer. The solar panel only powers the LCD readout for local direct reading and the E-CoderPLUS features are activated and performed by an advanced ASIC which is powered by the R900® or R450® MIU.

**Will the new E-Coder work with a receptacle and handheld with probe?**

- Yes. The E-Coder can be read with a probe. It can be programmed to output a 4-, 5-, or 6-digit reading, just like a ProRead™ encoder. A 10-digit register ID can also be programmed.

**Is it possible to read the E-Coder through an MIU if the LCD readout is not activated or failed?**

- Yes. The absolute odometer reading is stored in nonvolatile memory in the ASIC.

**Since the E-Coder does not have a mechanical odometer wheel bank, how are the digits encoded and what makes the E-Coder absolute?**

- The E-Coder features an advanced ASIC design using nonvolatile memory technology for a self-powered digital odometer. The digital registration odometer in the ASIC and the LCD readout are guaranteed to be absolutely the same. The visual registration and the remote reading are provided by the same source, making the E-Coder an absolute encoder.

**Why are there nine (9) digits on the LCD readout and I receive only eight (8) digits on my reading device?**

- The E-Coder features nine (9) digits for a visual read only for high-resolution meter testing and leak indication. Only eight (8) digits are passed through the route management software, which is more than adequate for billing purposes.

**I only bill in 100s/1000s. What happens to the additional digits?**

- The meter reading/route management software will truncate the unnecessary digits for billing if desired.

**One of the E-Coders I installed has a forward arrow with a plus sign (+) flashing very slowly in the LCD readout and it will not stop flashing. What is the problem?**

- This indicates a very low flow. Watch the 9th digit in the LCD readout and you will see it increment over time.

**One of the E-Coders I installed has a reverse arrow with a negative (-) sign in the LCD readout, and it will not stop flashing. What is the problem?**

- This icon indicates reverse flow. You either have backflow occurring at the site or the water meter has been installed backwards.

**Why are all of my E-Coders showing days of no flow following installation?**

- When E-Coders are shipped prewired and potted to R900 or R450 MIUs, the PLUS features are activated and the 35-day window is in effect. As long as there is no throughput, the E-Coders will log days of no flow. The E-Coders will also show backflow due to factory testing for backflow functionality. Current leak data will clear after 24 hours following testing at factory, but days of no flow and backflow data will not clear for 35 days following activation in the water system.

**What constitutes a leak? Will our customer service department be inundated with leak flags?**

- All algorithms are set to factor out typical day-to-day water usage such as ice makers, sprinklers, etc. A day is divided into 96 15-minute intervals. If all 96 15-minute intervals show water usage, this constitutes a continuous leak. If 50 to 95 of the 15-minute intervals show water usage, this constitutes an intermittent leak. Typically 15-20 percent of a water utility's customer base has undetected leaks.

**What is the flashing faucet icon on the LCD readout?**

- The flashing faucet indicates an intermittent leak occurrence over the last 24 hours. Check interior and exterior faucets and valves in toilets to see if leakage is occurring.

**What is the solid faucet icon on the LCD readout?**

- The solid faucet indicates a continuous leak occurrence over the last 24 hours. Check the 9th digit in your LCD readout to see if it is incrementing. If so, check interior and exterior faucets, valves in toilets, and look around the exterior of the home for signs of surface water.

**Is the E-Coder field programmable like the ProRead? If so, can you use the standard field programmer and the same programming functions that are used for ProRead?**

- The E-Coder is programmable like the ProRead for ID and reading digits; however, when the E-Coder is attached to an R900 or R450 MIU, it automatically detects this and begins communicating in E-CoderPLUS format.

**Is the E-Coder auto-detect?**

- Yes. The E-Coder will work with an inductive pad with a two-wire connection or a radio MIU with a three-wire connection.

**Are E-Coders networkable? Can two E-Coders be networked to one MIU?**

- The E-Coder is networkable just like the ProRead.

**Will the E-Coder work with Itron, Sensus, and other third-party radio MIUs?**

- E-Coder is compatible in 8-digit mode with Itron 100W, Sensus RadioRead and FlexNet, Aclara MTUs, and Elster Energy Axis (as long as these companies continue to follow the published E-Coder specifications).
- Any other third-party radio MIUs that have ProRead compatibility will also read the E-Coder; however, this is limited to a 6-digit reading.
- Only Neptune R900 or R450 MIUs can activate/interrogate the PLUS features of the E-Coder.

**Does the E-Coder have the same warranty as the ProRead register?**

- Yes. E-Coder has a full 10-year warranty. Please refer to the encoder warranty statement for details.

**Does the E-Coder provide rate-of-flow information?**

- The E-Coder provides a localized read out of average flow rate every twelve (12) seconds on the LCD display. Every twelve (12) seconds the word "RATE" will flash and the flow rate will be displayed for four (4) seconds. Flow rate is indicated in gpm for US gallons or cubic feet registration encoders and in lpm (liters per minute) for metric registers.

**What reading equipment will interrogate the PLUS feature data from the E-Coder when connected to the R900 MIU?**

- When used in conjunction with N\_SIGHT™ R900® host software and handheld software, the following devices can be used to extract E-CoderPLUS data: the Trimble Nomad with R900® Belt Clip Receiver, MRX920™ mobile data collector, or the R900® Gateway data collector.

**Neptune Technology Group Inc.**

1600 Alabama Highway 229  
Tallassee, AL 36078  
USA  
Tel: (800) 633-8754  
Fax: (334) 283-7293

**Neptune Technology Group (Canada) Ltd.**

7275 West Credit Avenue  
Mississauga, Ontario  
L5N 5M9  
Canada  
Tel: (905) 858-4211  
Fax: (905) 858-0428

**Neptune Technology Group Inc.**

Ejército Nacional No. 418  
Piso 12, Desp. 1201-1202  
Col. Chapultepec Morales  
Delegación Miguel Hidalgo  
11570 México, Distrito Federal  
Tel: (525) 55203 5294 / (525) 55203 5708  
Fax: (525) 55203 6503

